

USACE: EMERGENCY MANAGEMENT

Cathy Van Arsdale

St. Louis District



US Army Corps
of Engineers®



USACE DIVISIONS AND DISTRICTS



USACE has:

- 8 Divisions and 2 Provisional Divisions (Transatlantic and Europe)
 - 46 Districts
- Commanded by Lieutenant General William H. (Butch) Graham

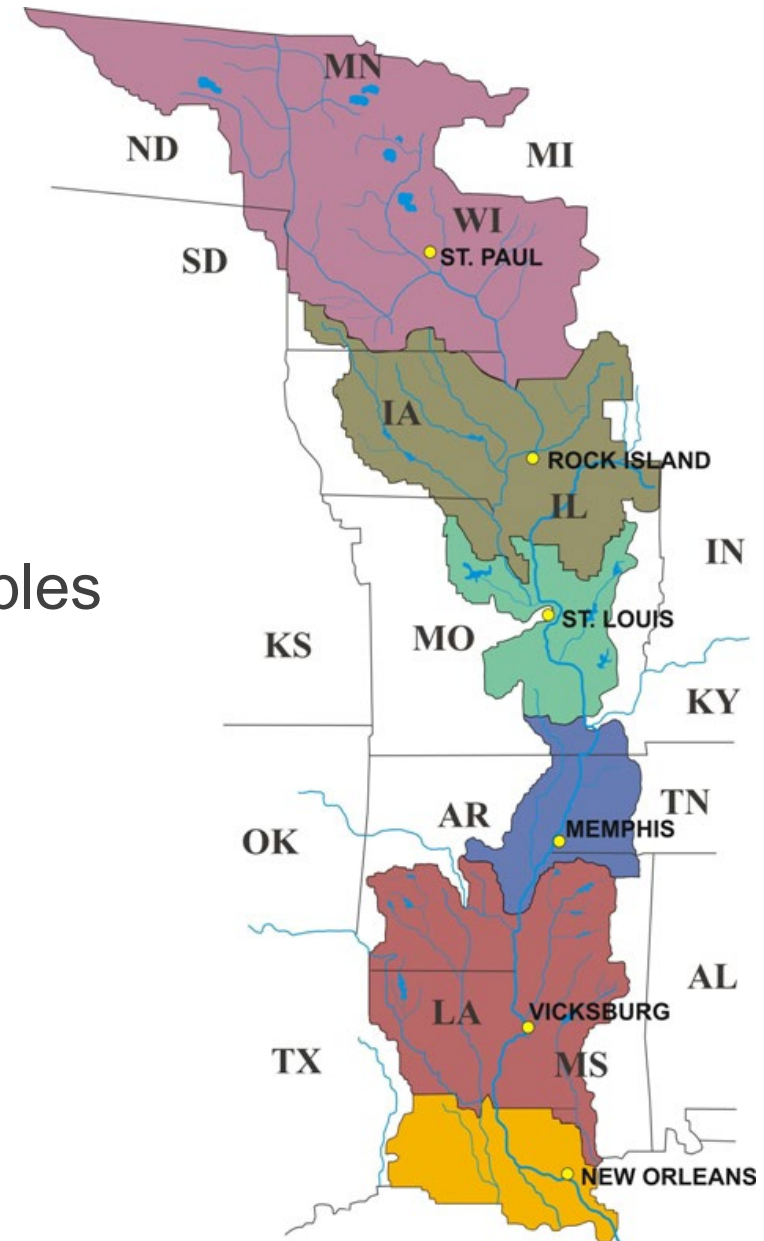


MISSISSIPPI VALLEY DIVISION (MVD)



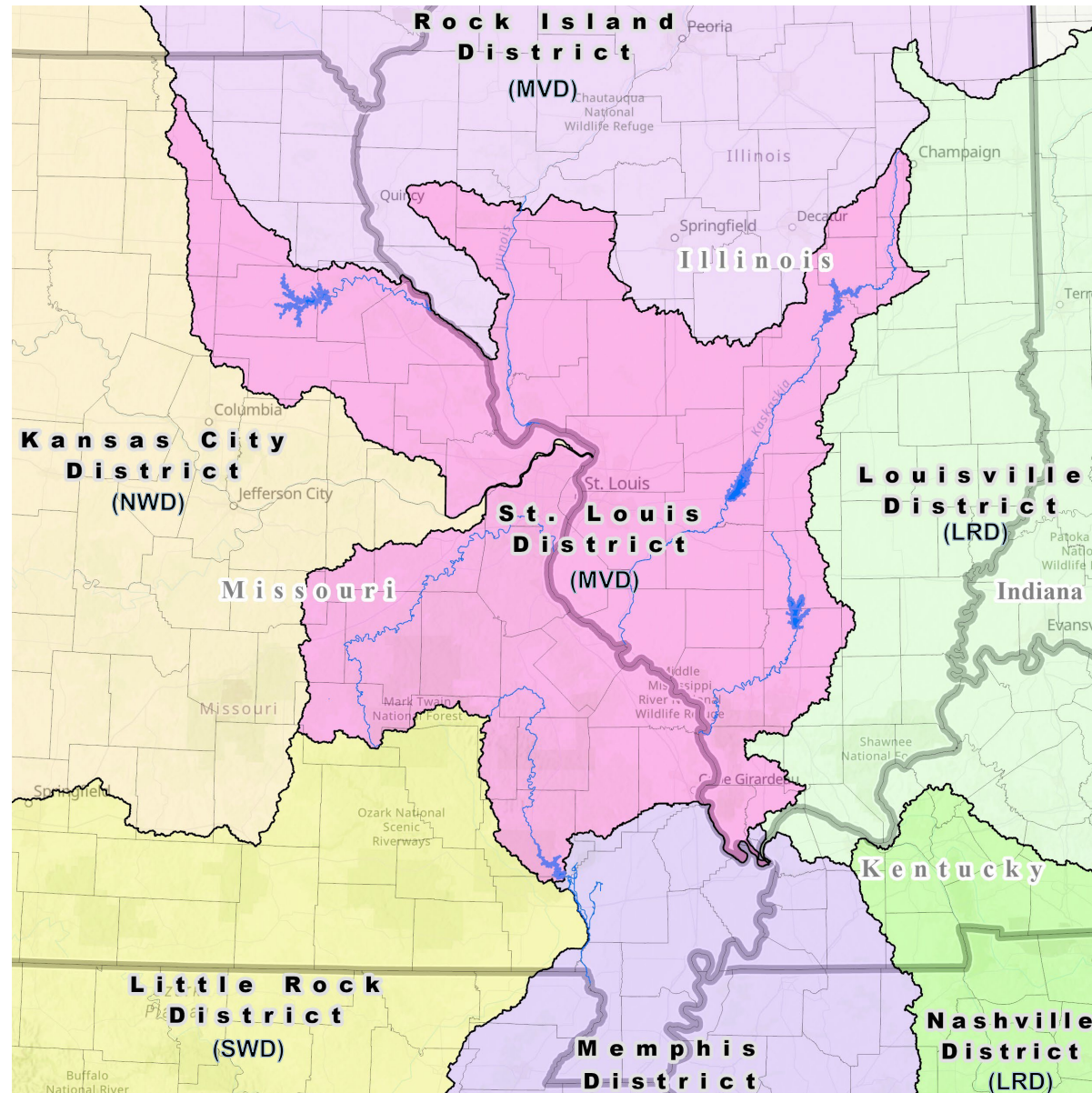
MVD has:

- 6 Districts
- Commanded by Major General Kimberly A. Peeples





ST. LOUIS DISTRICT

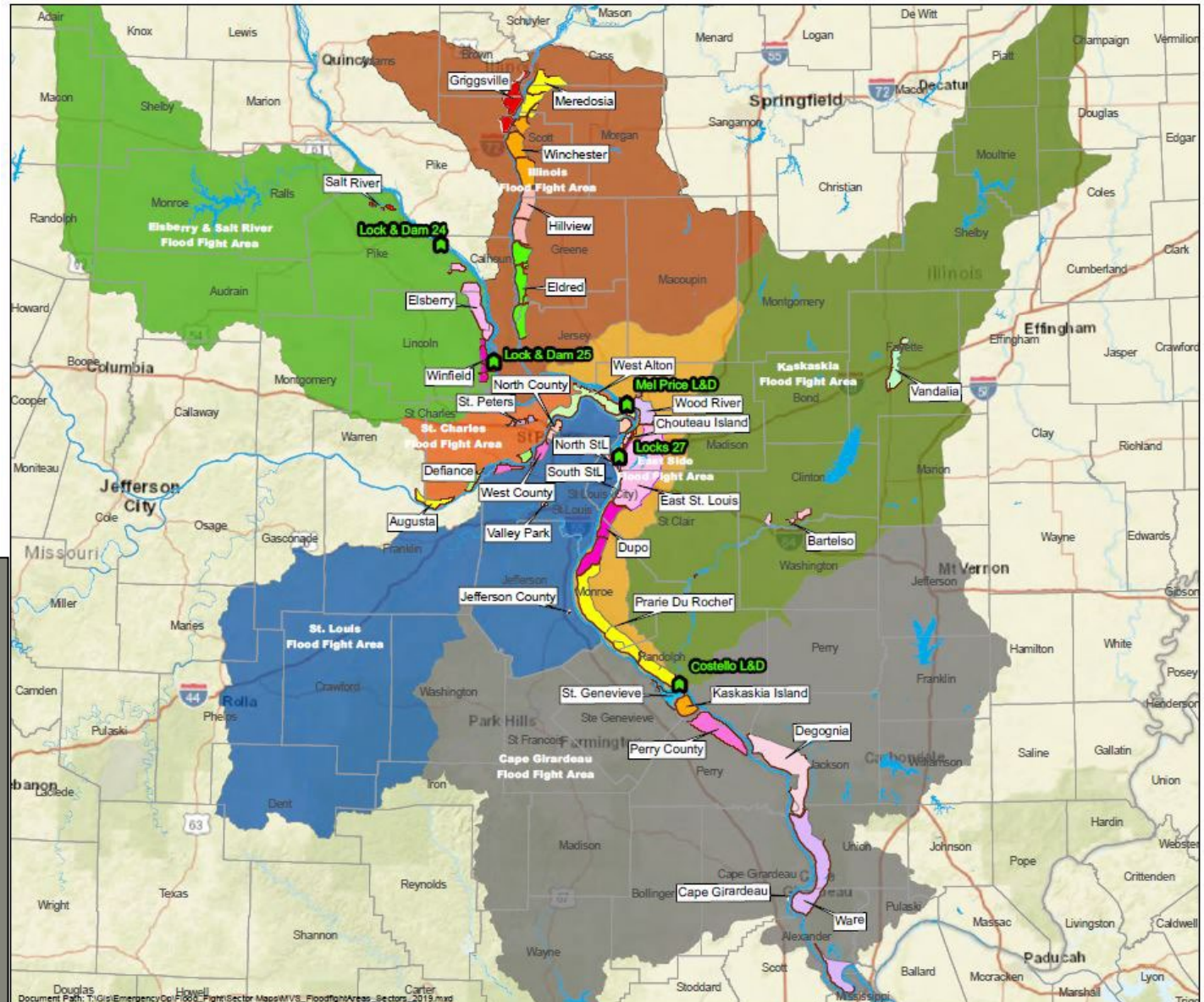




ST. LOUIS DISTRICT

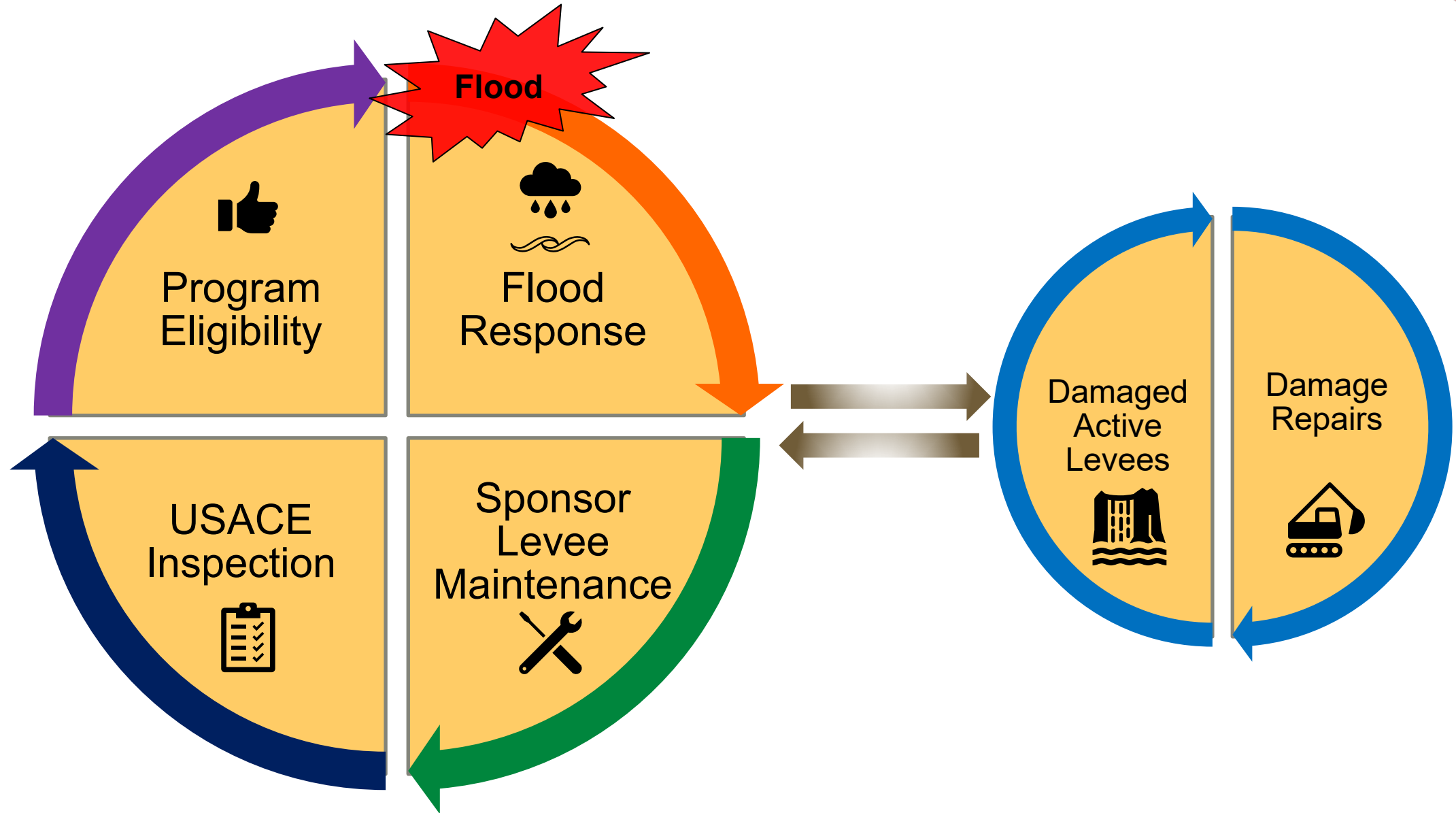


- Commander: Colonel Andy J. Pannier
- Deputy Commander LTC Andrew H. James





P.L. 84-99 PROGRAM





LEVEE INSPECTIONS



Levee Safety conducts levee inspections (nearly 80 points). Emergency Management considers a subset of the inspected items for P.L. 84-99 eligibility, often referred to as the “18 Items” determined to be the greatest risk.

Levee Embankments

- Encroachments
- Closure Structures
- Slope Stability
- Erosion/Bank Caving
- Animal Control
- Culverts/Discharge Pipes
- Relief Wells/Toe Drainage Systems

Interior Drainage System

- Culverts/Discharge Pipes
- Sluice/Slide Gates
- Flap Gates/Flap Valves/Pinch Valves

Floodwalls

- Encroachments
- Closure Structures
- Tilting, Sliding, Settlement of Concrete Structures
- Foundation of Concrete Structures
- Relief Wells/Toe Drainage Systems

Pump Stations

- Intake and Discharge Pipelines
- Sluice/Slide Gates
- Flap Gates/Flap Valves/Pinch Valves



FLOOD RESPONSE AUTHORITY



- USACE flood fight response under P.L. 84-99 is 100% federally funded with possible exception of supplies and equipment.
- Assistance not authorized for:
 - Private residences and/or private developments
 - Businesses, including strictly agricultural property.
- USACE emergency assistance is only to supplement Tribal, state, and local efforts and is temporary in nature.





FLOOD RESPONSE



Flood Response – USACE can provide flood response assistance when the State requests USACE assistance and we activate our EOC at our Commander's direction.

- Local resources must be fully employed

Assistance Consists of

- Technical Assistance
- Direct Assistance





TECHNICAL ASSISTANCE



- Technical assistance is what the USACE flood fight teams are there for – providing technical expertise to address a particular situation.
 - Support to local flood fight efforts.
 - Assistance / recommendations, not direction.
- The Corps does NOT direct evacuation of the areas protected by a flood control system.
- Corps has a Liaison Officer (LNO) at the State EOC to ensure timely information flow among the Corps, State, and local responders.

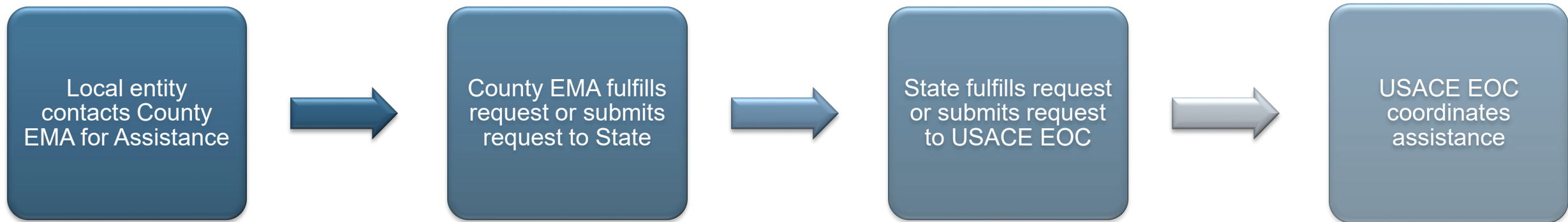




USACE AUTHORITY – DIRECT ASSISTANCE



- Direct Assistance –
 - Issuance of supplies and loan of equipment
 - Request must not be able to be filled locally or by state
 - Hand receipt required - signed by USACE and Sponsor / Levee District (borrower).
- USACE does NOT reimburse for flood fighting expenses, even if those costs are incurred based on actions that we recommend.





SANDBAGS AND “PLASTIC”



- Sandbags are empty – NO sand provided
- Come in pallet crates
- Will need trailer for hauling



- Poly Sheeting
- 20 x 100 feet





OTHER AVAILABLE BARRIERS



Large Sandbags →

- Airlift capable
- Wire rope slings for airlift drop

24–48-hour lead time



← Fabric-lined gabion basket

- Often referred as “Hescos” or “Hesco Barriers”
- 4’ Storm Line (1 unit = 15 LF)
- Gabion basket removal bar – after – for reuse of baskets
- Other flood barriers are being tested by USACE for use in the future.





SANDBAG FILLING MACHINES



- The automatic machine comes with two Corps employees for training and machine maintenance
 - Machine does not tie bags
 - Borrower must have sand, equipment to fill machine, diesel fuel, and manpower to fill, stack, and transport filled bags.



- One manual sandbag machine is also available





CRISAFULLI PUMPS



- 8" and 12"
- PTO powered (require external power)
- Must be hauled on borrowers' trailer (tires are not road-ready)
- Diesel pumps can be requested but have a 24–48-hour lead time

8in Pump

Regular Lift - Pump Curve
2550 GPM, 25 HP

Intermediate Lift - Pump Curve
3600 GPM, 50 HP

High Lift - Pump Curve
4000 GPM, 65 HP

12in Pump

Regular Lift - Pump Curve
4600 GPM, 35 HP

Intermediate Lift - Pump Curve
6500 GPM, 100 HP

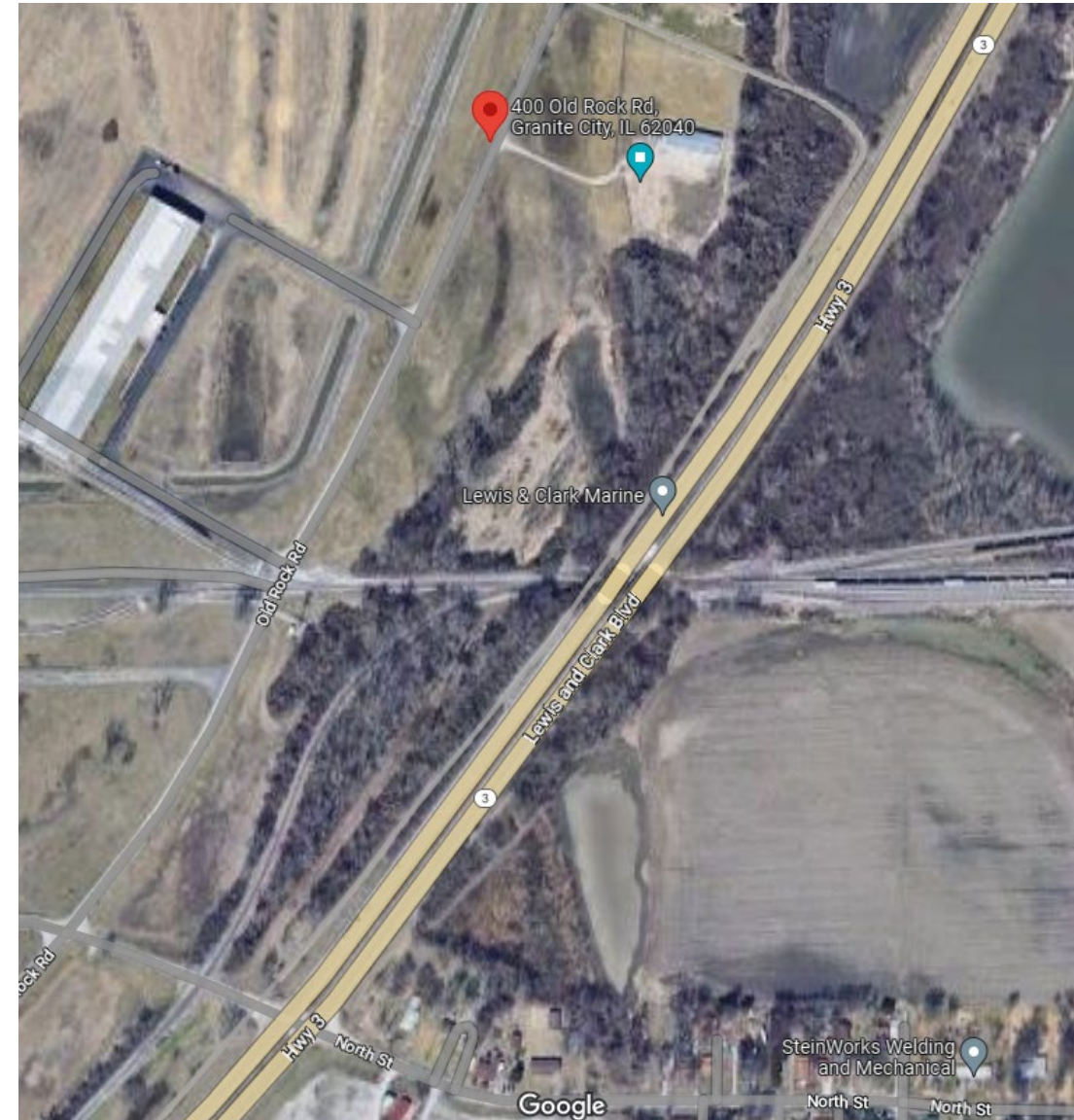
High Lift - Pump Curve
7000 GPM, 125 HP



PICKUP & RETURN

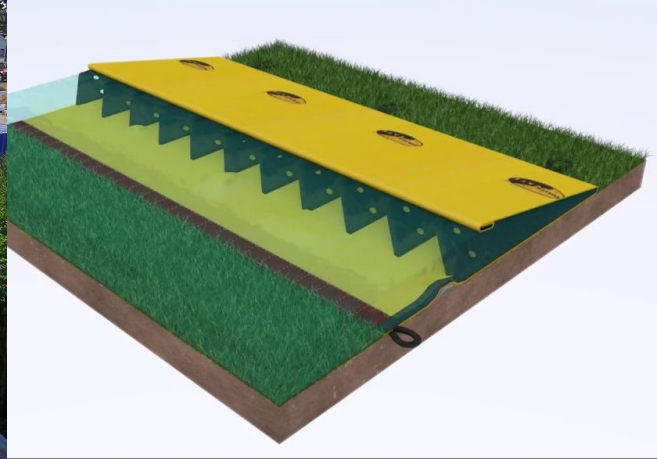


- Warehouse at 400 Old Rock Road, Granite City, IL
- No delivery (except automatic sandbagger)
 - Pick up at warehouse – need to arrange time (call EOC at 314-331-8605)
- Return to warehouse within 60 days from close of event
 - Same condition as when borrowed
 - Borrower must repair damages





LIMITLESS OPTIONS FOR PRIVATE PURCHASE



Approved



**USACE does not endorse any specific products or brands



FLOOD RECOVERY



P.L. 84-99 Rehabilitation Activities

- Authorized to assist with repair of eligible federal and non-federal levees damaged by flooding that are active in P.L. 84-99.
 - Certain conditions must be met, and funds must be available.
- Approved flood repairs are completed by USACE contractors to USACE standards.
- Non-federal Sponsors pay 80/20 cost share through cash or work in kind (or combination).
- Federal levees are repaired at 100% federal cost, except for borrow materials and real estate



DAMAGES ELIGIBLE FOR REPAIR

- Breaches
 - Including intentional breaches IF coordinated in advance with USACE EOC
- Slides
- Wave wash
- Culvert damage
- Gate damage
- Pump station damage
- Some underseepage damages





INELIGIBLE DAMAGES



- We do not address the following (other agencies may have programs that can assist, e.g., USDA, NRCS, FEMA)
 - Debris removal
 - Flood fight materials removal
 - Intentional breach repair if not pre-coordinated with EOC





POST FLOOD PROCESS



Water returns
to “bank full”



EOC sends notice to
Sponsors to submit
request for
assistance (RFA)

- Sponsors have 30 days to submit RFA



DSR Team documents
damage identified by
Sponsor

- In addition, hydro, terrestrial, and aerial surveys may be used to better define issues.



Project Information
Report (PIR) with
high level design and
cost estimates
submitted to MVD.



MVD Approval = PIR
is authorization
document to move
forward



Plans and
Specs



Contract
Award



Repair



PL 84-99 Repairs



What you can do to help speed up repair process:

- Identify potential borrow areas now.
- Get landowners and attorney involved as early as possible.
 - We don't need the paperwork, just certification you've acquired lands, easements, and rights of way.
- Return Cooperation Agreement to Project Manager (PM) ASAP.
- Notify Project Manager of potential problems providing lands and easements.
- Return Real Estate documentation (Authorization for Entry and Attorney Certification) to MVS ASAP.



CONTACT INFO:

Shane Simmons, P.L. 84-99 Project Manager
314-331-8496

Shane.M.Simmons@usace.army.mil





EMERGENCY ACTION PLAN (EAP)



Outlines the planned preparedness activities and coordination by the Sponsor to manage flood emergencies, including:

- Points of contact
- Roles and responsibilities
- Levels of emergency activation/actions based on river levels
- Communication and notification procedures
- Emergency equipment and supplies maintained by the non-federal sponsor



THANK YOU

